

OPPDRAGSNUMMER 256261

STRANDVEIEN 1

VEDLEGG # 17

Grunnundersøkelser: CPTU - sonderinger

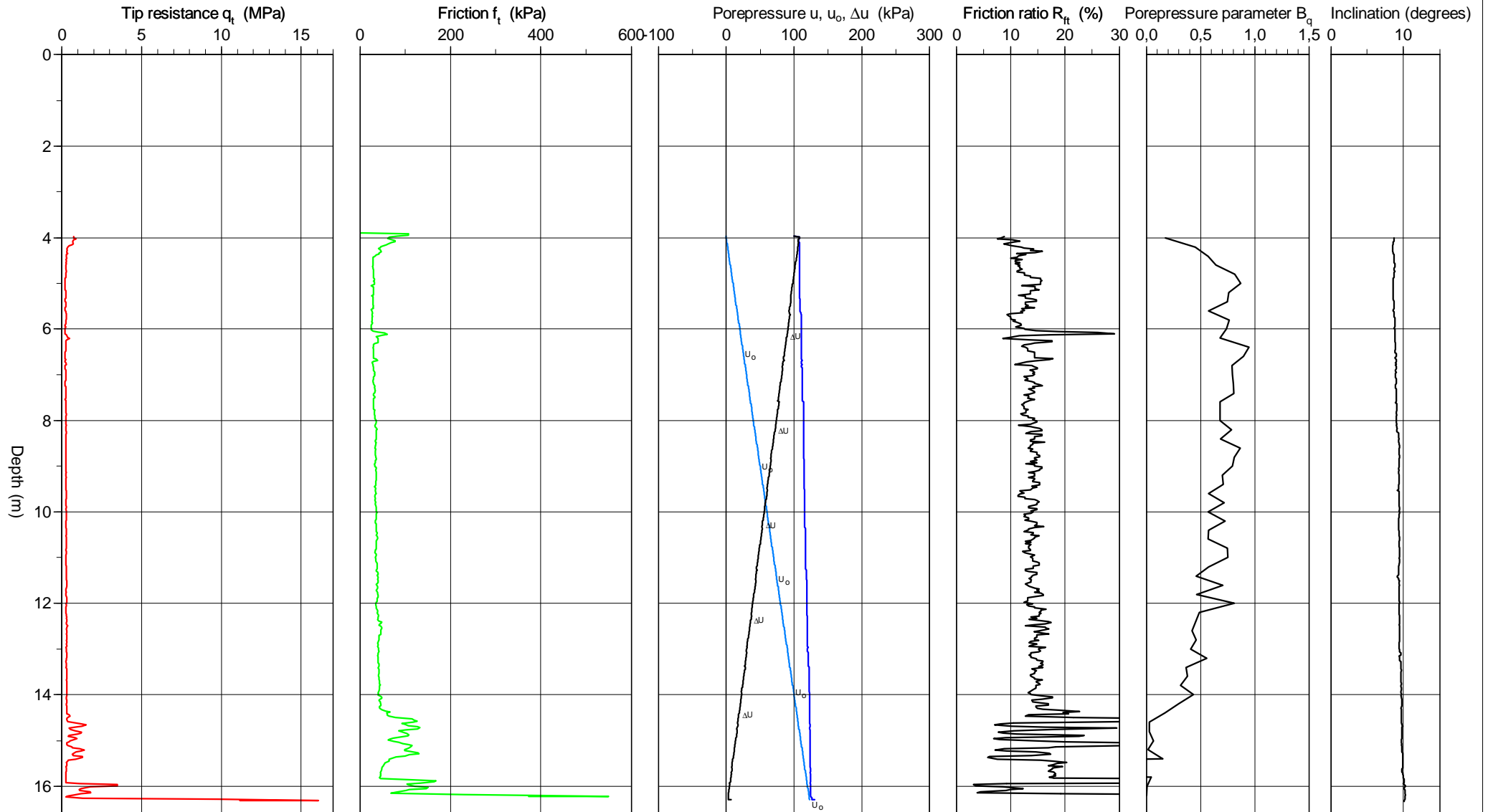
CPT-test performed according to EN ISO 22476-1

Predrilling depth 4,00 m
 Start depth 4,00 m
 Stop depth 16,50 m
 Ground water level 4,00 m

Reference
 Level at reference
 Predrilled material
 Geometry Normal

Fluid in filter
 Coordinats
 Equipment
 Cone nr 3562

Project Strandveien 22, Skedsmo
 Project nr 170440
 Site 2335478.000
 Designation Hull 4
 Date 120313



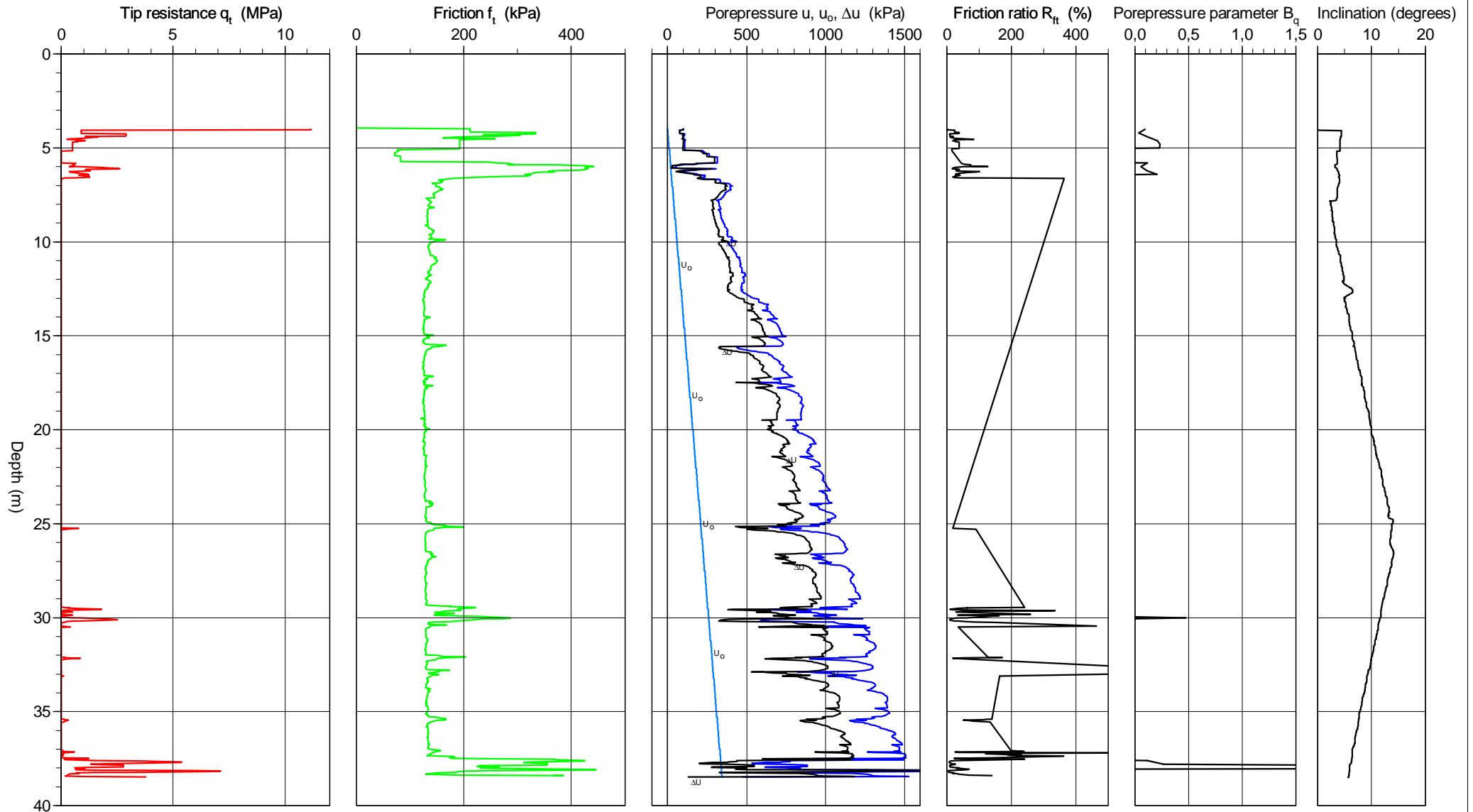
CPT-test performed according to EN ISO 22476-1

Predrilling depth 4,00 m
 Start depth 4,00 m
 Stop depth 38,92 m
 Ground water level 4,00 m

Reference
 Level at reference
 Predrilled material
 Geometry Normal

Fluid in filter
 Coordinats
 Equipment
 Cone nr 3562

Project Strandveien 22, Skedsmo
 Project nr 170440
 Site 2335478.000
 Designation Hull 8
 Date 120313



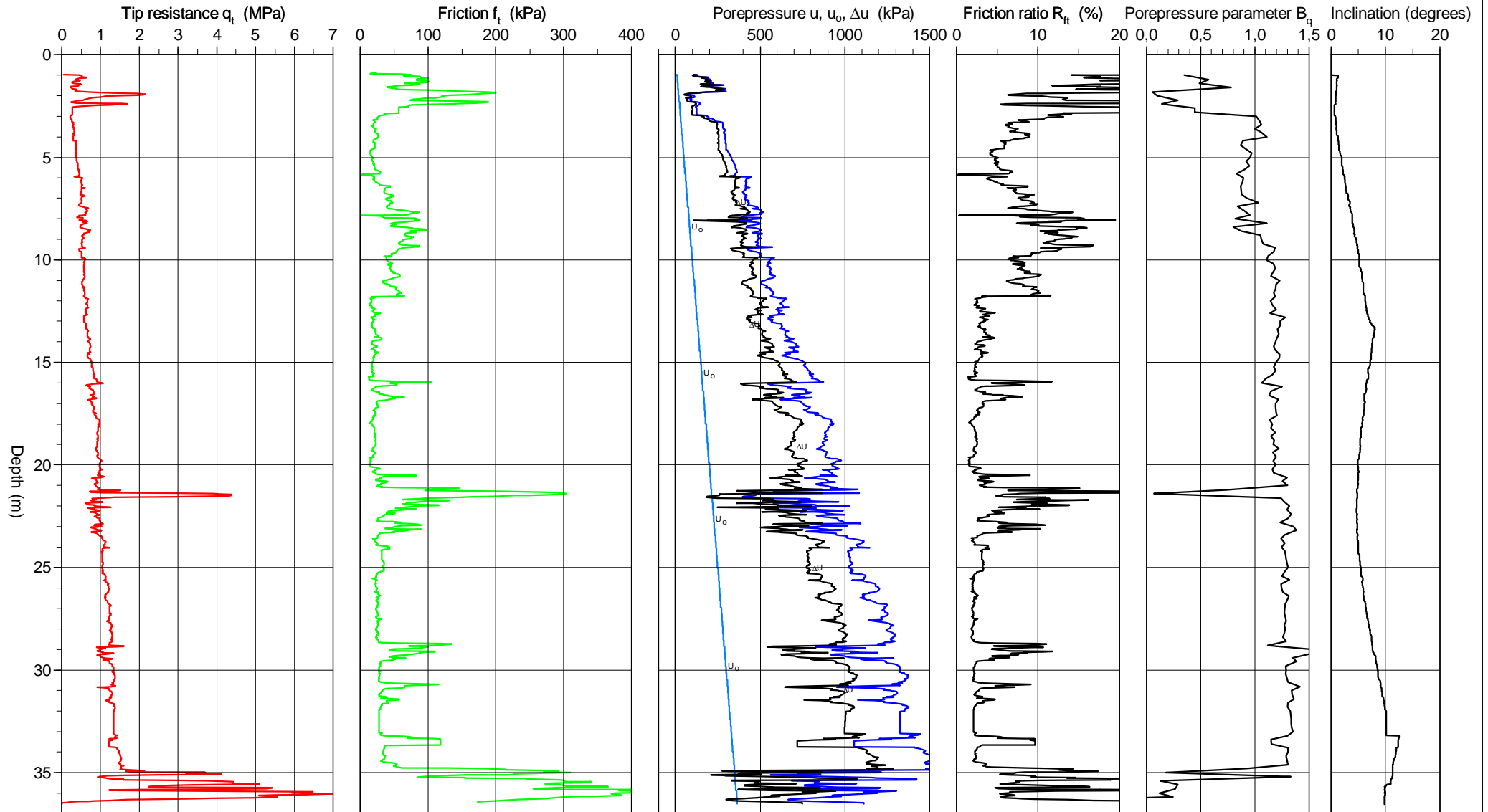
CPT-test performed according to EN ISO 22476-1

Predrilling depth 1,00 m
 Start depth 1,00 m
 Stop depth 36,77 m
 Ground water level 0,00 m

Reference
 Level at reference
 Predrilled material
 Geometry Normal

Fluid in filter
 Coordinats
 Equipment
 Cone nr 3562

Project Strandveien 22, Skedsmo
 Project nr 170440
 Site 2335478.000
 Designation Hull 12
 Date 120306



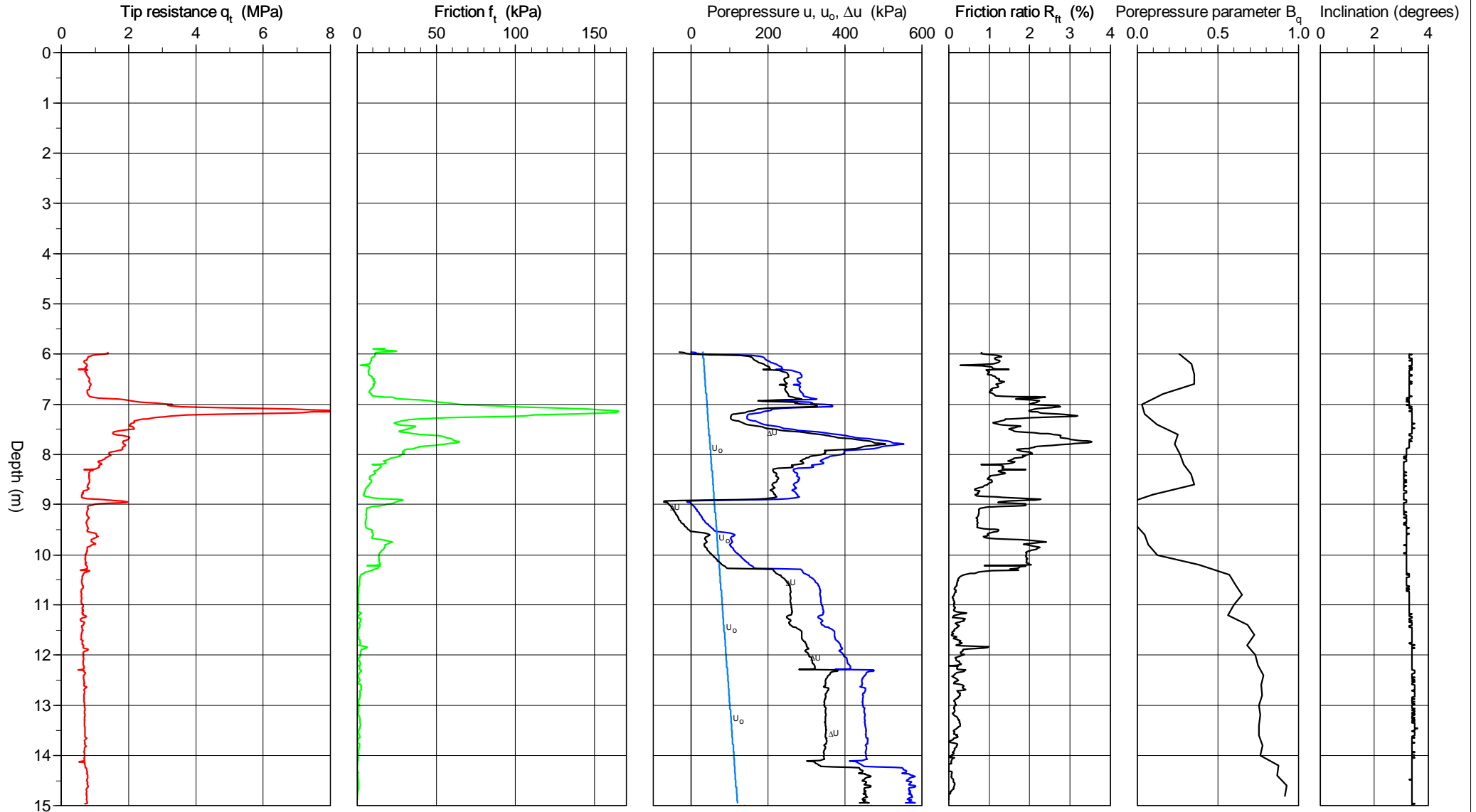
CPT-test performed according to EN ISO 22476-1

Predrilling depth 6.00 m
 Start depth 6.00 m
 Stop depth 15.00 m
 Ground water level 3.00 m

Reference
 Level at reference
 Predrilled material
 Geometry Normal

Fluid in filter
 Coordinats
 Equipment
 Cone nr 51401

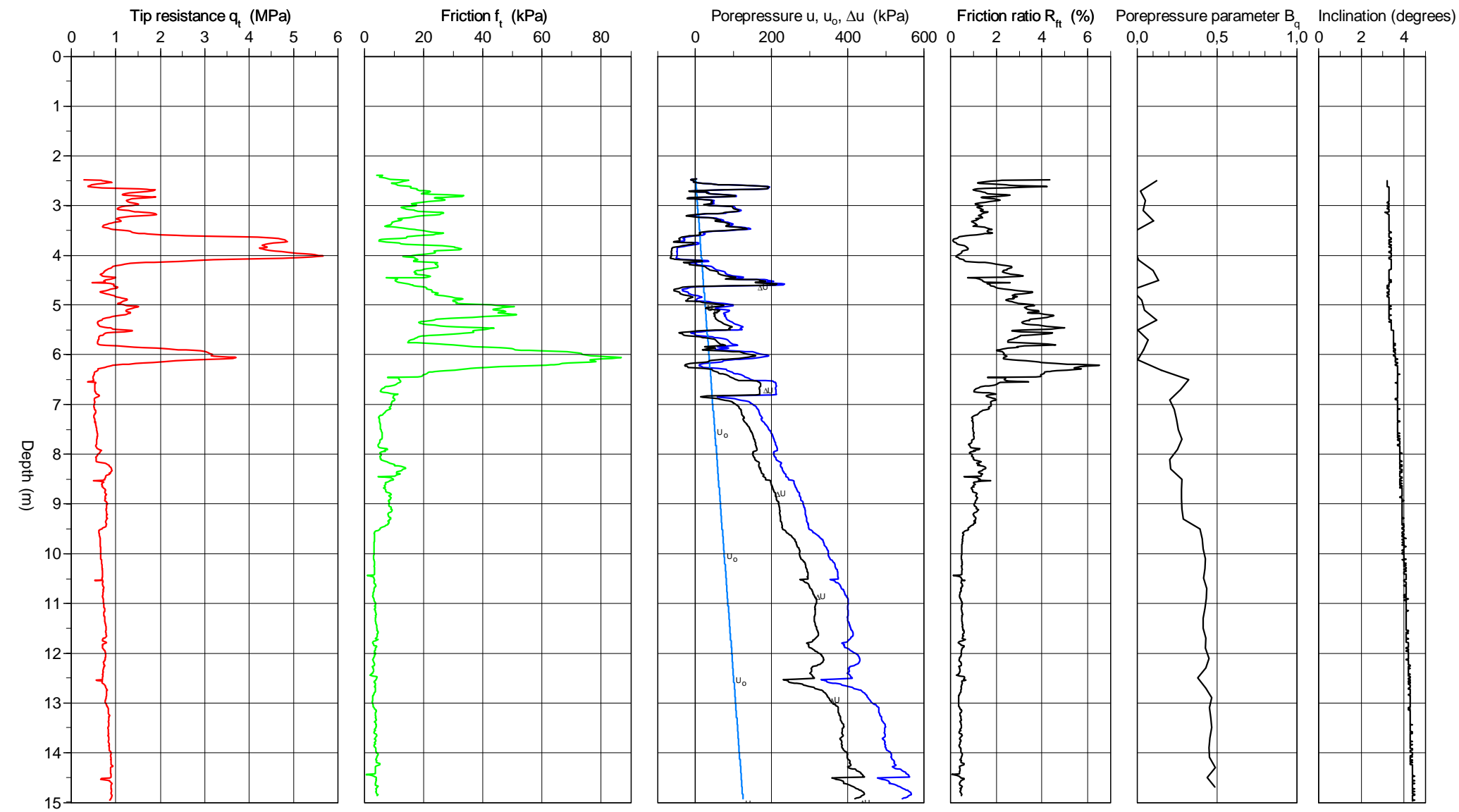
Project Strandveien 22, Skedsmo
 Project nr 170440
 Site strandveien
 Designation Hull 13
 Date 20140523



CPT-test performed according to EN ISO 22476-1

Predrilling depth	2,50 m	Reference	Fluid in filter
Start depth	2,50 m	Level at reference	Coordinats
Stop depth	15,00 m	Predrilled material	Equipment
Ground water level	2,50 m	Geometry	Cone nr
		Normal	51401

Project	Strandaveien 22, Skedsmo
Project nr	170440
Site	Strandveien 22
Designation	Hull 15
Date	20140520



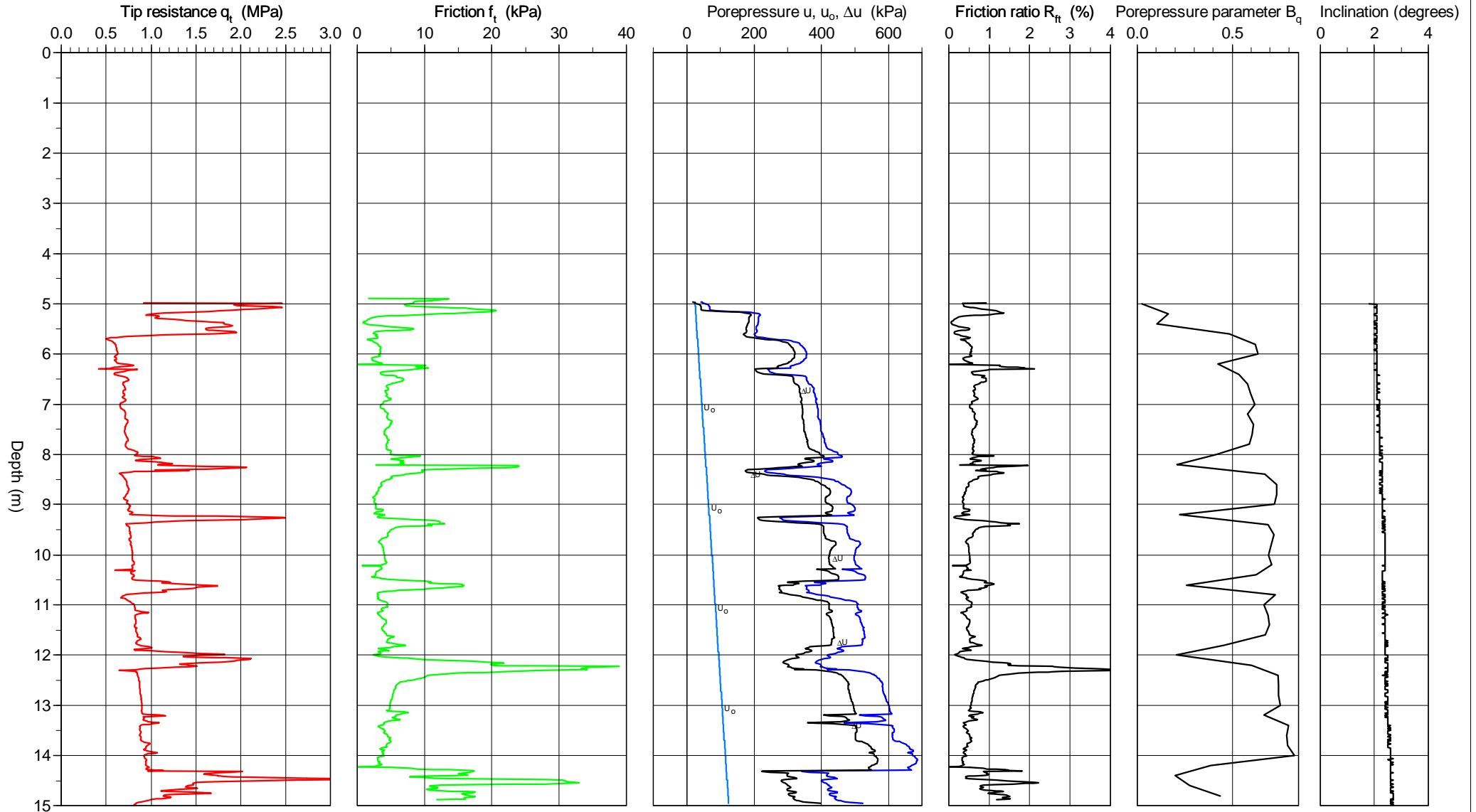
CPT-test performed according to EN ISO 22476-1

Predrilling depth 5.00 m
 Start depth 5.00 m
 Stop depth 15.00 m
 Ground water level 2.50 m

Reference
 Level at reference
 Predrilled material
 Geometry Normal

Fluid in filter
 Coordinats
 Equipment
 Cone nr 51401

Project Strandveien 22, Skedsmo
 Project nr 170440
 Site strandveien
 Designation Hull 19
 Date 20140523



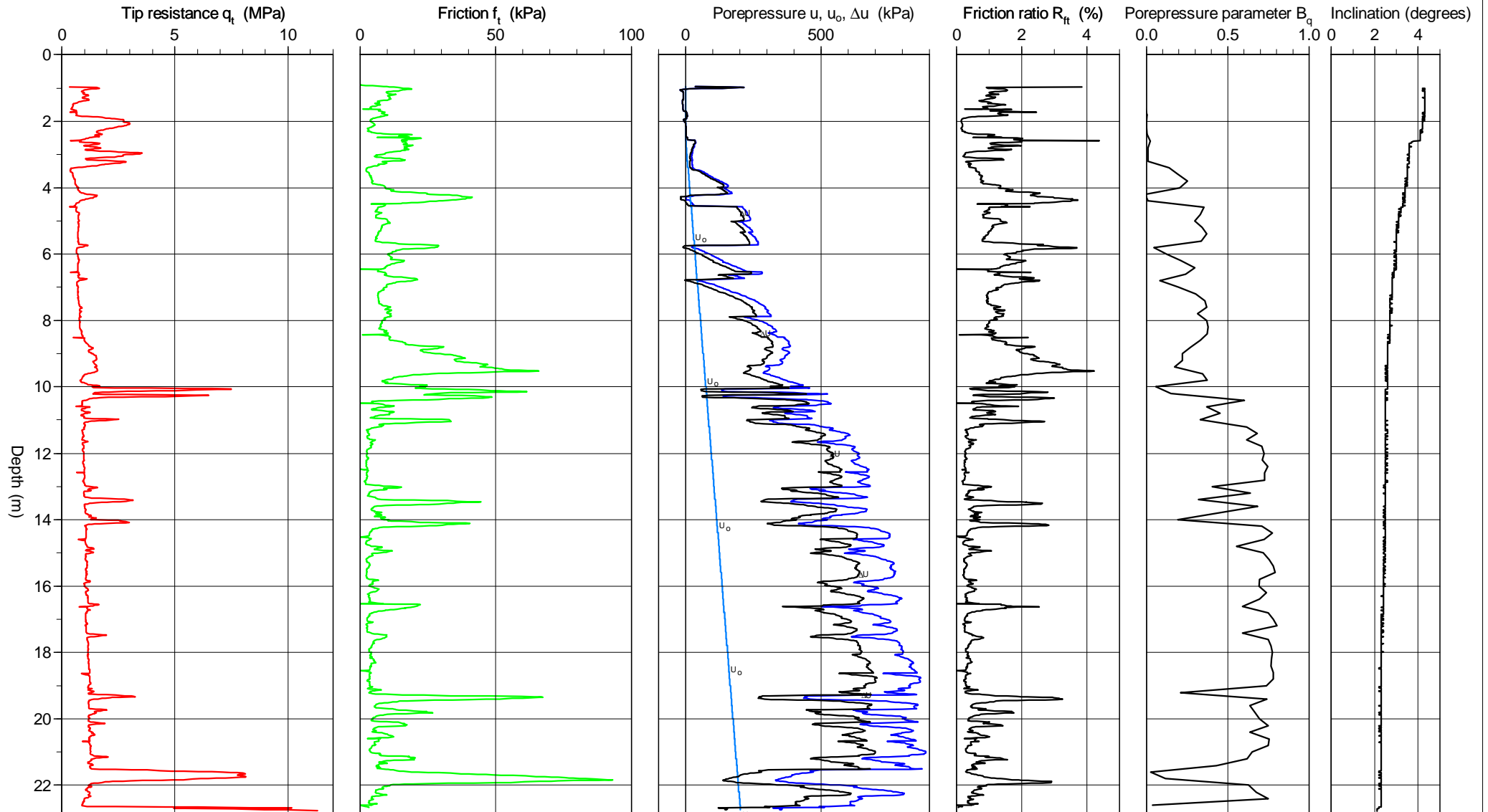
CPT-test performed according to EN ISO 22476-1

Predrilling depth 1.00 m
 Start depth 1.00 m
 Stop depth 22.80 m
 Ground water level 2.50 m

Reference
 Level at reference
 Predrilled material
 Geometry Normal

Fluid in filter
 Coordinats
 Equipment
 Cone nr 51401

Project Strandveien 22, Skedsmo
 Project nr 170440
 Site Strandveien 22
 Designation Hull 21
 Date 20140521



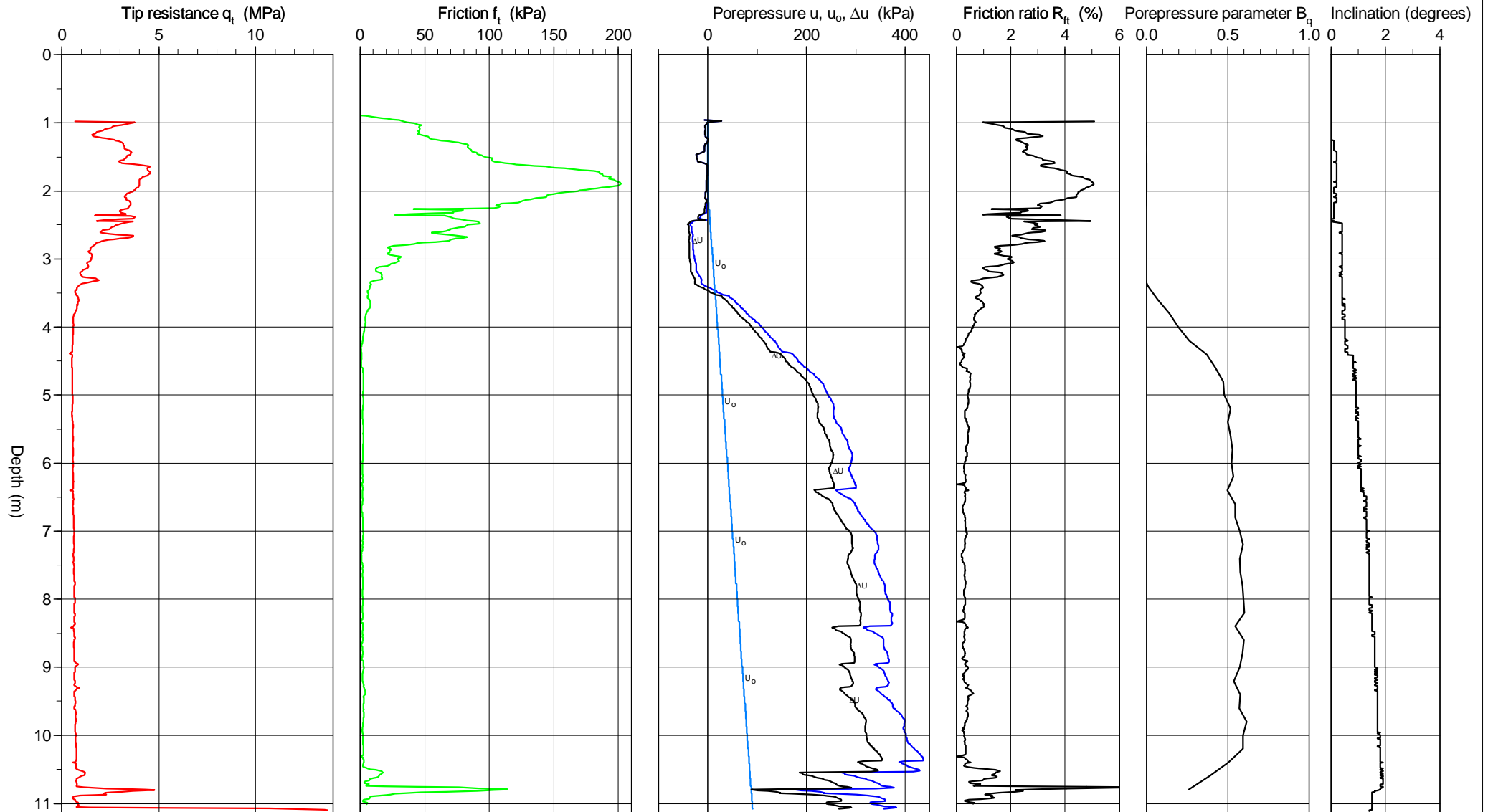
CPT-test performed according to EN ISO 22476-1

Predrilling depth 1.00 m
 Start depth 1.00 m
 Stop depth 11.12 m
 Ground water level 2.00 m

Reference
 Level at reference
 Predrilled material
 Geometry Normal

Fluid in filter
 Coordinats
 Equipment
 Cone nr 51401

Project Strandveien 22, Skedsmo
 Project nr 170440
 Site strandveien
 Designation Hull 25
 Date 20140523



CPT-test performed according to EN ISO 22476-1

Predrilling depth 3.00 m
 Start depth 3.00 m
 Stop depth 15.00 m
 Ground water level 3.00 m

Reference
 Level at reference
 Predrilled material
 Geometry Normal

Fluid in filter
 Coordinats
 Equipment
 Cone nr 51401

Project Strandveien 22, Skedsmo
 Project nr 170440
 Site strandveien
 Designation Hull 26
 Date 20140522

